

MEADOW BROOK THEATRE

A Professional Theatre on the Campus of Oakland University

THE EXTENDED STAY HOTELS PRESENT



ROUTE 66

Written & Created by Roger Bean
Musical Arrangements by Brian Baker

April 24 - May 19, 2024



BRITAIN'S FINEST

THE COMPLETE BEATLES EXPERIENCE

CONCERT & CUISINE - JULY 12, 2024

***A FUNDRAISING EVENT TO BENEFIT
MEADOW BROOK THEATRE***

INQUIRE AT THE BOX OFFICE FOR TICKETS!

Welcome to Meadow Brook Theatre

Michigan's Answer to Broadway - 57th Anniversary Season

A Message From the Directors

Cheryl L. Marshall & Travis W. Walter



The Road Less Traveled

At Meadow Brook Theatre, we owe our success to the continued support of loyal theatregoers like you. Thank you for making Meadow Brook Theatre your home for live entertainment. As we travel down the road tonight with rock and road hits from the 60s, we are thrilled to have you as our guest for *Route 66*. Tonight you will ride along with truckers, bus drivers, and car enthusiasts as you see a show with feel-good music sure to put a smile on your face. We hope you will fall in love with this musical revue comedy.

Up next, you will feel for the woman who would become Ella Fitzgerald as she rises to stardom from her hardscrabble beginnings as we close out the season with Detroit native Freda Payne starring in *Ella, First Lady of Song*.

We hope that you will renew your season tickets or become a subscriber today. The upcoming 2024-2025 season has been announced and we are extremely excited for the enriching stories it will bring us.

We are eternally grateful for our Meadow Brook Family. Our actors, audiences, donors, volunteers and staff all work together to create the captivating theatre you are about to enjoy.

As always, thank you to Oakland University. We are extremely proud to have a home on this beautiful campus.

Enjoy the show!

Cheryl L. Marshall

Managing Director

Travis W. Walter

Artistic Director

HOUSE RULES

To allow others around you to enjoy the play, we remind you to please turn off your cell phones. The use of video and/or photography is strictly prohibited. Violations may be punishable by ejection and may render the offender liable for monetary damages.

Children under the age of 5 years old are not allowed into the theatre during performances.

After the show, we invite you to take a moment to share your experience with us through Facebook, Twitter, & Instagram.

Share your review of *Route 66* using

#MBTRoute66 or **#MBTheatre**

ROUTE 66

Written & Created by Roger Bean
Musical Arrangements by Brian Baker

TANNER CALLICUTT* MIKE DINNEEN*
LUKE HODGSON* CONOR MCSHANE*

Managing Director
CHERYL L. MARSHALL

Artistic Director
TRAVIS W. WALTER

Director
TRAVIS W. WALTER

Music Director
STACY WHITE

Choreographer
DEBBIE WILLIAMS

Scenic Design
BRIAN KESSLER

Costume Design
KAREN KANGAS-PRESTON

Lighting Design
SCOTT ROSS

Sound Design
MIKE DUNCAN

Dance Captain
CONOR MCSHANE*

Stage Manager
BRITTANIE NICHOLE SICKER*

Assistant Stage Manager
LEE CLEVELAND*

Route 66 is presented by special arrangement with Broadway Licensing, LLC
www.broadwaylicensing.com

*Members of Actors' Equity Association, the union of Professional Actors and Stage Managers in the United States

UNION AFFILIATIONS:

This theatre operates under an agreement between the League of Resident Theatres and Actors' Equity Association, the Union of Professional Actors and Stage Managers in the United States. The theatre operates under the agreement with the International Alliance of Theatre Stage employees, Local 38



**Members of Actors' Equity Association, the union of Professional Actors and Stage Managers in the United States*



Meadow Brook Theatre is a Constituent of Theatre Communications Group (TCG), the national organization for the nonprofit professional theatre, The Auburn Hills Chamber of Commerce, Culture Source, Rochester Chamber of Commerce, Michigan Business & Professional Association, and an original founding member of League of Resident Theatres (LORT), an organization comprised of theatre companies throughout the nation.

NOTE TO AUDIENCE: The videotaping or audio/or visual recording of this production is a violation of United States Copyright Law and an actionable federal offense

THE CAST



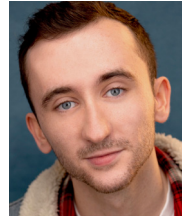
Tanner
Callicutt



Mike
Dinneen



Luke
Hodgson



Conor
McShane

Understudies never substitute for listed players unless a specific announcement for the appearance is made at the time of the performance.

Understudy for Tanner & Mike..... RAEGAN CANTRELLE

Understudy for Luke & Conor.....JACOB LIPSKI

THE BAND

Conductor/Keyboard.....STACY WHITE

Bass.....JACKSON STONE

Drums.....LOUIS JONES III

INSIDE THE THEATRE:

Special Seating

is available for wheelchairs. To make arrangements, please call the box office at 248.377.3300

Listening Devices

are available if needed. For information call 248.377.3300

Lost Items

should be reported to the House Manager or by calling the Box Office at 248.377.3300

PLEASE DON'T SMOKE

Smoking is prohibited on all Oakland University owned or operated campuses, grounds and buildings.



Fred A. and Barbara M.
Erb Family Foundation



This activity is supported by the
MICHIGAN COUNCIL FOR ARTS
AND CULTURAL AFFAIRS and the
NATIONAL ENDOWMENT FOR THE ARTS

MEADOWBROOK THEATRE

EST. 1966

Michigan's Answer to Broadway

SPOTLIGHT ON THE 2024-2025 SEASON

SIX SHOWS STARTING AT \$198



STRANGERS ON A TRAIN

Footloose
THE MUSICAL



The Angel Next Door

Vanities: The Musical



The Rat Pack Lounge

SHEAR MADNESS
ROCHESTER'S HILARIOUS WHODUNIT!



A Christmas Carol*

*Not included as part of the 24-25 Season

RENEW OR SUBSCRIBE TODAY

248-377-3300 WWW.MBTHEATRE.COM

MUSICAL NUMBERS

ACT I

“Texaco Star Theme”	All
“Let’s Go for a Ride”	Conor, Tanner & All
“Bring My Cadillac Back”	Luke & All
“Hot Rod Queen”	Tanner & All
“Every Woman I Know”	Mike & All
“Route 66”	All
“The Mother Road”	Mike & Tanner
“Used to Be”	Luke, Tanner & All
“The Girl on the Billboard”	Conor
“Six Days on the Road”	Luke, Tanner & Mike
“Beep Beep”	Conor, Tanner & Luke
“Tulsa Straight Ahead”	Mike & All
“Roloids, Doan’s Pills & Preparation H”	Conor
“Oklahoma Hills”	Luke & All
“Long Tall Texan”	Mike & All
“Truck Stop Cutie”	Tanner & All
“Truck Drivin’ Man”	Luke & All

~~ There will be one fifteen minute intermission ~~

ACT II

“On the Road Again”	All
“Gallop to Gallup”	Conor & All
“The Long Red Line”	Tanner & All
“Diesel on My Tail”	Conor & Tanner
“Don’t Haul Bricks on 66”	Luke & Mike
“Highway Patrol”	Conor & All
“King of the Road”	Luke
“The Little Old Lady from Pasadena”	Tanner & All
“Dead Man’s Curve”	Mike & All
“KTMI Jingle”	All
“SS 396”	Conor & All
“Move Out Little Mustang”	Luke & All
“Hey Little Cobra”	Tanner & All
“GTO”	Mike & All
“Finale: Route 66”	All
“Encore: Fun, Fun, Fun/I Get Around”	All

DIRECTOR'S NOTE

The famed Route 66 is an American and international icon running about 2,400 miles from Chicago, Illinois, to Santa Monica, California. It was heralded as the shortest and most direct route between the Great Lakes and the Pacific Coast. The route had its official beginnings in 1926 when the Bureau of Public Roads launched the nation's first Federal highway system. By 1937 it was paved end to end. In 1956, legislation created the Interstate System and bypasses started to detract from the route's popularity. In 1985, Route 66 was officially decommissioned. Today only 85% of the road is drivable.

Although the bypasses withered the surrounding communities along Route 66 leaving derelict gas stations and restaurants behind, the road is still a slice of American innovation that attracts nostalgic motorists. Today, preservation societies have been formed and parts of the route have been designated National Scenic Byways. Tonight's show is an example of various people you could've met and situations you might've encountered along "The Main Street of America".

Travis W. Walter
~Director

LCP GRAB BARS

GRAB BAR INSTALLATION

BATHROOMS • HALLWAYS • GARAGES • STEPS

Safety Within Your Reach!



CALL ONE OF OUR
REPRESENTATIVES TODAY!

586-945-9126

•

248-579-3716

•

810-858-8124

Just one call, we do it all!

OUR STORY

Meadow Brook Theatre has grown into Michigan's largest producing professional theatre.

For 57 years, MBT has distinguished itself as one of the finest producing regional theatres in the nation. Steeped in a long tradition of mounting top quality productions and building partnerships with the community, Meadow Brook Theatre continues to be a pillar of arts and culture for Oakland County and surrounding areas.



Artwork by Chet Johnson

BECOMING A NONPROFIT

Due to state funding cuts, the Oakland University Board of Trustees was faced with a difficult decision to end its stewardship of MBT and in June of 2003 the theatre was forced to either close its doors, or become its own 501(c)3 nonprofit entity. Through the efforts of dedicated theatre staff, patrons, and donors, Meadow Brook Theatre has risen above that difficult time and continues to receive regional and national recognition for its work.

ENSURE THE FUTURE
BY MAKING A DONATION



www.MBTheatre.com/Donate

WHO'S WHO

TANNER CALLICUTT Tanner was most recently seen on Broadway in *Parade*. Tour: *Hairspray*. Regional: Maine State Music Theatre, New Bedford Festival Theatre, and Laguna Playhouse. Education: BFA Acting, Elon University. Thanks to Craig and the amazing team at Avalon Artists Group; and to my parents for their never-ending support! @jtcallcutt

MIKE DINNEEN Mike is a NYC-based actor and contractor who has worked on national tours, the Disney Cruise Line, and in notable regional theatres such as Ogunquit Playhouse, The Rev, and Playwrights Horizons. Alongside acting, Mike built his own company, Ovation Home Repair (get it?), a contracting company in NYC. He is excited to be in Michigan. Many thanks to Dave, Emily, his family, but mostly his mother.

LUKE HODGSON Luke is a NYC based performer originally from Clarkston, Michigan. He's a proud graduate of Wayne State University, as well as the Atlantic Acting School. Past shows include *The Million Dollar Quartet* with TRMF, *The Wizard of Oz* with Vital Theatre Company, and *Route 66* at Pines Dinner Theatre.

CONOR MCSHANE (*Dance Captain*) Conor is thrilled to be at Meadow Brook Theatre! His favorite credits include Cosmo Brown in *Singin' in the Rain*, Johnny Blood in *Desperate Measures*, and Buddy in *Elf*. Bachelor of Fine Arts Pace University. Thank you to Annie's Playhouse and his amazing family for their endless support! Tiktok: @hiconor117

TRAVIS W. WALTER (*Director*) is an alumnus of Oakland University and has been an employee at MBT since 2002. In May of 2010, Travis was named Artistic Director after previously holding the title of Interim Artistic Director during the 2009-2010 Season. Travis continues to enthral audiences by bringing Michigan, North American, and world premieres to life on MBT's stage. In 2013, he was named one of Oakland County Executive L. Brooks Patterson's Elite

40 Under 40; professionals from various business, government and non-profit sectors charged with giving recommendations to improve quality of life in Oakland County. Travis has won numerous awards for his directing at MBT and has directed over 70 productions at the theatre. Travis was the youngest person to be appointed as Artistic Director of MBT and has currently held the position the second longest.

STACY WHITE (*Music Director/Keyboard*) After boot scootin' onstage as "Angela" in *Honky Tonk Angels* last season, Stacy is pleased to once again take the road less traveled and return as Musical Director on *Route 66*. It has made all the difference. Past MD credits include *Beyond the Rainbow*, *Reunion*, *Breaking Up is Hard to Do*, *70 Girls 70*, and *Why Do Fools Fall in Love* (MBT); and *Cabaret*, *Grease* (JET) Artistic Director of Peanut Gallery Players, a 501(c)(3) non-profit children's theatre training company. "Be the Monkey!"

DEBBIE WILLIAMS (*Choreographer*) is thrilled to return to MBT for *Route 66!* Choreography credits: *Honky Tonk Angels*, *Little Shop*, *Fancy*, *Nana Does Vegas*, *Working*, and *Why Do Fools Fall in Love* here at MBT, *Cabaret* at The JET, regional productions of *A Chorus Line*, *Forever Plaid*, *The Scarlet Pimpernel*, and the films *Liberty's Secret* and *Ten Questions Henry Ford*, among others. Much gratitude to Travis and Cheryl for the opportunity. For Ron and Daph with Love!

BRITTANIE NICHOLE SICKER (*Stage Manager*) Britt is excited to join the company at MBT after over a decade on the road. Career highlights include tours of *Jersey Boys*, *Kinky Boots*, *Rock of Ages*, *Legally Blonde*, *Million Dollar Quartet*, *Priscilla Queen of the Desert*, *Burn the Floor*, *Choir of Man*, *Cirque Le Masque*, *Marilyn: Forever Blonde* and *Patti LuPone in Concert: Don't Monkey with Broadway*. Britt has been lucky enough to work and travel in 40 US states, 62 countries and 6 continents.

WHO'S WHO

LEE CLEAVELAND (*Assistant Stage Manager*) is an equity actor, stage manager, and Michigan State alum. Past Meadow Brook Theatre ASM credits include last season's productions of *Noises Off* and *Honky Tonk Angels*. Other regional Assistant Stage Manager credits include *Cabaret* (The JET), *Out of Orbit* and *Beau Jest* (Williamston Theatre). Outside of theatre, Lee works in film production and as a touring musician. @lee_cleveland

JACKSON STONE (*Bass*) is an electric and upright bass player from Southeastern Michigan. As he finishes his studies in music education at Oakland University, Jackson is happy to be back for his fourth show at Meadow Brook. He would like to thank Calleigh and his family for their constant love and support!

LOUIS JONES III (*Drums*) stands out as one of the most prominent drummers hailing from the city of Detroit. Starting with just two wooden spoons, Louis quickly established himself as a natural musician, honing his craft with sticks, brushes, and mallets as he grew more experienced. By the age of 12, he realized his true passion and knew that he would pursue music as a full-time career.

BRIAN KESSLER (*Scenic Design*) is in his 19th season with MBT. He is also the theatre's Production Manager. Favorite design credits include: *Murder On The Orient Express*, *Mary Stuart*, *Johnny Manhattan*, *ATOMIC* and *Dracula: A Rock Opera*. Brian also has designed for Mosaic, OCC, and The Ringwald. Brian would like to thank Jess and his family for all their love and support.

KAREN KANGAS-PRESTON (*Costume Design*) teaches Costume Design at Michigan State University. Her designs have been seen at Meadow Brook Theatre (recently: *Noises Off*, *Little Shop of Horrors*, *Pin Up Girls*, and *Fancy*), Williamston Theatre, Summer Circle Theatre, and MSU's Department of Theatre. karenkangaspreston.com

INSTALLED *to perfection*



KITCHENS ■ BATHS ■ WINDOWS ■ DOORS
TRIM & LUMBER ■ DECKS

Full-Service Home Center and Lumberyard.
Expert Design and Installation Services. Expansive Displays
featuring Inspiration for Every Room in Your Home!

DILLMAN & UPTON

A MANS FAMILY COMPANY

607 Woodward Street | Rochester | 248.651.9411
dillmanupton.com



Buller Chiropractic Clinic

Dr. Jeffrey E. Buller Hours by appointment

Dr. Jeffrey S. Buller Phone 248.652.9191

Serving Rochester for 40 years Fax 248.652.9739

294 W. Tienken Rd.
Rochester Hills MI 48306

www.bullerchiropractic.com
drbuller@bullerchiropractic.com

CK Diggs
Restaurant & Bar

OPEN FOR LUNCH & DINNER
41 DRAFT BEERS
A VARIETY OF LOCAL MICHIGAN BREWS ALWAYS AVAILABLE

NW CORNER OF CROOKS & AUBURN ROAD
ROCHESTER HILLS / 248.853.6600 / CKDIGGS.COM

WHO'S WHO

SCOTT ROSS (*Lighting Design*) is happy to be returning to Meadow Brook Theatre. Locally some of Scott's previous work has been done at Henry Ford College and The Jewish Ensemble Theatre. They include *Hairspray*, *Tenderly*, *Grease*, *Moonlight and Magnolias* and most recently at Meadow Brook Theatre *Honky Tonk Angels*.

MIKE DUNCAN (*Sound Design*) is excited to be back for another season at Meadow Brook Theatre. As Resident Sound Designer, Mike has designed and run sound for every production since 2005 (unless picking up an instrument for the occasional musical). Past favorites include *On Golden Pond*, *The 39 Steps*, and *The Spitfire Grill*.

CHERYL MARSHALL (*Managing Director*) has been working at MBT over the past 37 years. She became managing director in 2007 and since that time has been instrumental in the growth of MBT and its awareness in the national theatre conversation. She is proud of the work her

"Theatre family" produces season after season and even more thrilled to see you, our patrons, at every play. She would like to thank Larry and the 3 Js and her 4 adorable grandchildren for their constant love and support.

ROGER BEAN (*Playwright / Creator*) Roger Bean created the long-running Off-Broadway smash hit *The Marvelous Wonderettes* (WestsideTheatre), along with the sequels *Wonderettes: Caps & Gowns*, *Winter Wonderettes*, and *Wonderettes: Dream On*. Original cast albums for all *Wonderettes* shows are available from iTunes and Amazon. *The Marvelous Wonderettes* received the 2007 LA Ovation Award for Best Musical for its record-breaking Los Angeles run and continues to be an audience favorite in regional and amateur theatre companies throughout the country. Mr. Bean's doo-wop hit *Life Could Be A Dream* had a record-breaking 12-month run in Los Angeles, receiving the Los Angeles Drama Critics Circle Award, the LA Weekly Theatre Award, and the Backstage Garland Award for Outstanding Musical.

Mr. Bean wrote and created the popular jukebox musicals *Summer of Love*, *The Andrews Brothers*, *Route 66*, *Honky Tonk Laundry*, and *Why Do Fools Fall In Love?*, all currently available through Broadway Licensing. Additional musicals created by Mr. Bean include *Don't Touch That Dial!*, *That's Amoré*, and *Beach Blanket Bash*.

FOLLOW US ON SOCIAL MEDIA!

Like us on Facebook at
Meadow Brook Theatre

Follow us on Instagram
@Meadowbrooktheatre

Follow us on Tiktok and X
@MBTheatre

Simplify your mortgage experience!

Lynn Marie Oates

Loan Officer NMLS #1495433

248 875 1029
lynnoates@goforwardmortgage.com
2901 Auburn Rd Suite 200
Auburn Hills, MI 48326



NMLS #2401659





The Best in Eyewear
20/20 Vision
Dr. David Dolan
Sandra Kowalewski
248.375.0040
3110 Walton Blvd. Rochester Hills, MI 48309



Freda Payne

Starring in

Ella, First Lady of Song

Written and Directed
by Lee Summers
Conceived by Maurice Hines

The legendary Freda Payne will be reprising her role as Ella Fitzgerald in *Ella, First Lady of Song* at Meadow Brook Theatre!

This jazz musical traces the 60-year career of Ella Fitzgerald and her hard childhood through her enduring legacy in the music world and beyond.

May 29 - June 23, 2024

Tickets available at [ticketmaster.com](https://www.ticketmaster.com) or call the Box Office at (248) 377-3300.

Grammy-Nominated Recording Artist and Detroit Native, Freda Payne became an established Jazz and R&B singer in the mid 1960s. Yielding a string of smash hits for Motown such as "Band of Gold," "Deeper and Deeper," and "Bring the Boys Home."

During the past two decades, Payne has turned her talents to acting and has appeared on stages across the United States.



SONG CREDITS

ROUTE 66 MUSIC

Music Clearance by Rubicon II Music Clearance, Burbank, CA. All Songs Used By Permission. All Rights Reserved.

Beep Beep

by Donald Claps & Carl Cicchetti © EMI Longitude Music Co. (BMI)

Bring My Cadillac Back

by Thomas Knight © Random Music, Inc.

Dead Man's Curve

by Jan Berry, Roger Val Christian, Brian Douglas Wilson & Art Kornfeld © Screen Gems-EMI Music Inc. (BMI)

Diesel On My Tail

by Jim Fagan © Hank's Music, Inc. (BMI) & Francis and Marvin (BMI). All rights on behalf of Hank's Music, Inc. (BMI) & Francis and Marvin (BMI) administered by Unichappell Music Inc. (BMI)

Don't Haul Bricks On 66

by George Hawke © Happy Chappy Music

Every Woman I Know

by William Emerson © Used through the courtesy of Conrad Music, a division of Arc Music Corp.

Fun Fun Fun

by Brian Wilson & Mike Love © Irving Music, Inc. (BMI)

G.T.O.

by John Buck Wilkin © Warner-Tamerlane Publishing Corp. (BMI)

Gallop To Gallup

by David Sanger & Dale Watson © Fat Manor Publishing/Dale Watson Music (BMI)

Girl On The Billboard

by Walter Haynes & Hank Mills © Used by arrangement with Johnny Binstock Music (BMI)

Hey Little Cobra

by Marshall Connors & Carol Connors © Marshall K Music and Vadim Music. All rights administered by Songs of Windswept Pacific (BMI)

Highway Patrol

by Red Simpson, Dennis Payne & Ray Rush © Beechwood Music Corp. (BMI)

Hot Rod Queen

by John Getz © Used through the courtesy of Jewel Music Publishing Co., Inc.

I Get Around

by Brian Wilson & Mike Love © Irving Music, Inc. (BMI)

King Of The Road

by Roger Miller © Sony/ATV Songs LLC (BMI)

Let's Go For A Ride

by Harlan Jackson © Used through the courtesy of Regent Music Corp.

The Little Old Lady From Pasadena

by Don Altfeld, Roger Christian & Brian Wilson © Careers-BMG Music Publishing, Inc. (BMI)/Screen Gems-EMI Music Inc. (BMI)

The Long Red Line

by Mary Cutrufello © Cutrufello Music (BMI)

Long Tall Texan

by Henry Strzelecki © courtesy of Copper Music Co. (ASCAP)

Mother Road

by Alan Rhody & Kevin Welch © Sony/ATV Tunes LLC (BMI)

Move Out Little Mustang

by Don Altfeld, Roger Christian & Brian Wilson © Screen Gems-EMI Music Inc. (BMI)/Careers-BMG Music Publishing, Inc. (BMI)

Oklahoma Hills

by Leon Guthrie & Woody Guthrie © courtesy of Michael H. Goldsen, Inc. (ASCAP)

On The Road Again

by Willie Nelson © EMI Longitude Music Co. (BMI)

Roloids, Doan's Pills & Preparation "H"

by Marie Dudley & Max Harter © Shelby Singleton Music, Inc. (BMI)

Route 66

by Bob Troup © courtesy of Troup London Music (ASCAP)

Six Days On The Road

by Earl Greene & Carl Montgomery © Southern Arts Music

SS 366

by Louis Adessa & Vince Benay © Jपालana Music/Print Music (BMI)

Texaco Star Theme

by W. A. Fredericks © Texaco, Inc.

Truck Drivin' Man

by Terry Fell © Unichappell Music Inc. (BMI) & Elvis Presley Music (BMI). All rights on behalf of Elvis Presley Music (BMI) administered by Unichappell Music Inc. (BMI)

Truck Stop Cutie

by Lee Emerson © Used by arrangement with Fort Knox Music, Inc./Trio Music Co, Inc. (BMI)

Tulsa Straight Ahead

by Jimmy Hall © Used by permission of Cherio Corp. (BMI)

Used To Be

by Thomas Skinner & Robert Wiles © Cimarron Soul Publishing

AFFORDABLE RENTAL COMMUNITIES FOR SENIORS

“Where you’re the star of the show!”



CSI Support & Development

Belleville

Carleton

Center Line

Clawson—NEW!

Dearborn

Heights

Detroit

Ecorse

Ferndale

Flat Rock

Hazel Park

Highland Park

Resident-members benefit from:

- *Senior empowerment*
- *Continuing education*
- *Diversity & open membership*
- *Democratic control*
- *Social interaction*
- *Not-for-profit operation*

Kalamazoo

Madison

Heights

Plymouth

Pontiac

Riverview

Romulus

Royal Oak

Southgate

Trenton

Warren

Wyandotte



www.csi.coop

For more information call 800-593-3052

TDD: 800-348-7011



A limited number of apartments are available in some locations for younger persons who are physically disabled and need the special features of a unit designed for the mobility impaired. Income limits apply. Most utilities are included.



2023-2024 DIRECTOR'S CIRCLE
Major Donors of Meadow Brook Theatre

\$100,000

The Samuel L. Westerman Foundation

\$25,000+

*The Fred A. & Barbara M. Erb Foundation
Meadow Brook Theatre Guild
Michigan Arts and Culture Council
The Shubert Foundation*

\$10,000+

*JoAnne E. & Arden T. McClure
Ken & Peggy Philippi
Anita & John Savio*

\$5,000+

*Tim & Mary Caughlin
Generous Patron*

*Daniel & Kathy Moore
Ray & Michelle Butters-
In Loving Memory of Bill Zandi*

\$2,500+

*Floy & Lee Barthel
Thomas & Maryann Foxlee
Tamara Foster-
In Loving Memory of Sandra Haydel*

*Mary Sloan & Jeff Lichty
Cheryl & Larry Marshall
MSU Federal Credit Union
Ramona & Christoph Winarski*

\$1,000 ~ \$2,499

*AMI Automated Media Inc.
DeAnna André-
In Memory of Alberta Bodeen
Sandra & James Bade
The Barry Bashur Foundation-
In Memory of Peggy Bashur
Hess & Speedy Bates
Mary Ann & Walter Boguslaw
BorgWarner
Mary Jo Byrd
Eleanor A. Christie
Peg Christina
In Memory of Bob Christina
James & Elizabeth Christopher
Community Foundation
of Greater Rochester*

*Rick & Melinda
Conway-Callahan-
In Memory of Corinne Opitck
Marjory W. Epstein
In Memory of Donald Epstein
Michael Fligstein
Generous Patron
Jerry & Kitty Gentile
Dan Goggin
Gregory Heleski
John Hile
Gordon L. Hollander
Dr. Masud Imran &
Dr. Farida Shibli
Tyrick Wiltz Jones*

*Terence Kilburn
Jaclyn Labarbera
Lincoln of Troy
Meadowbrook Insurance Agency
Michael & Christine Nykiel
Donald D. O'Dowd
Michele Olind
Robert & Beverly Pears
David & Julie Peven
Dr. Ora Hirsch Pescovitz &
Dr. Daniel Walsh
Kathryn & Vincent Scanio
Diane Stumpf
Franklin & Barbara Wloch*

\$500 ~ \$999

*J.M. Aiuto
Anonymous
Alice Buckley & Edward Dawda
Richard & Janice Caloia
Terry W. & Linda A. Carpenter
Generous Patron
Keith & Eileen Gifford
Julie Granthen
Kurt & Julia Hillebrand*

*Richard & Carol Johnson
Bill & Connie Jordan
Dave Kata
Bob & Sue Klemmer
John & Kristen LaMacchia
Doreen Lasorda
Stephanie Nichols
Fola Odetola
Mike Phillips*

*Kim Ostin
Michael & Stephanie Riley
Doug & Shelia Selke
Christa Siegel
Phyllis J. Busch &
Charlotte Singewald
Victor & Sue Ellen Walter
Harold & Myra Weiss
Jeff & Judie Wurges*

\$200 ~ \$499

Actor's Equity Foundation
Lynn & Douglas Allen
Alan & Diane Amendt
Richard Baker
Robert & Patricia Bartoy
Richard Beaubien
Jane Bentham
Keith & Dikka Berven
Camille & Donald Breen
Paul & Louise Borucki
Harley Buchanan
Tom & Shirley Butler
Robert & Shirley Cafmeyer
Barbara Sue Carlson
Richard & Della Carlson
James Chernenko
Sharon Chicklas
Dave & Mary Cottrell
Jean Craig Flynn
Donna & Craig Crawford
Karen Crawford
Jeanine & Michael Daly
Mark & Janet Davison
Susan Davison
Mary & Ronald Deneweth
Thomas Denhof
Nancy Derby
C Joseph Doerr

In Memory of Amanda Doerr
Phil & Althea Doolittle
Steven Ferrucci
Jack & Jane Flaharty
Jean Craig Flynn
Lisa Foster
Mr. Fred Gallasch & Mary Hepler
Tony & Patty Garcia-

In Memory of Jack V. Garcia
In Memory of Andrew "Drew"
Garcia
Mimi & Frank Glasgow
George & Margaret Glinke
Mark Guthrie

MJ Guznack
Anthony Haga
Robert & Linda Hayes
Bruce Henderson
Jay & Carol Herbst
Victor & Marie Horne
Carolyn Jones
Donald Ketai
Carol Kiger
Adam Kollin
Arnold Kollin
Dennis & Linda Kollin
Jerry & Ellen Kott
George & Jan Kozloff
John & Mildred Krnacik
Richard & Barbara Krueger
Gene & Birdie Kutcher
Connie Landgraff
Tom Lasorda
Laurence & Kathleen Leniczek
Mary Magyari
Rae L. & Jeffrey E. Mandel
Richard Marsh
Rick & Kris McClethen
William McGinty
Penelope McPhee
Ron & Theresa Meegan
Beverly A. Miller

In Memory of
Dr. Ronald Miller
Louis Miller
Robert Miller
Paul & Pamela Mooradian
Margaret Morrison
Karen & Dave Motzny
James & Catherine Murphy
Don & Kay Nelson
Manuel & Norma Orona
Patrick & Janice Palmer
Andrea & Richard Parker
Rev. Rich & Jan Peacock-
In Honor of Jennifer Fry

David & Barbara Peckham
Marsha & Stan Pieprzyk
Georgina Pietrzak
Gary & Barb Reetz
Sharon Schmitt
David & Ann Schweiger
Sheila & Jim Scovic
Frank & Claudia Seymour
Debbie Sharer
James & Judy Shipley
Susan & Paul Sirgany
Dr Otto Soltes

In Memory of
Matthew Soltes
Philip & Kathrine Steel Glen
& Colleen Steyer
Bill Stockard &
Beverly Bryan
Claudia & Barbara Stoffa
Noyce Strait
Larry & Barbara Stringer
Kevin & Deborah Sullivan
Joyce Swantek
Sharon Swol
Carolyn & Craig Thomson
Michael Tomkins
Julie Toniaetto
Peter & Irene Townsend
Westphal Family
Linda & Paul Willen
Anthony & Joanne
Wisniewski
Dave & Joanne Wood
David & Mary Wood
William & Linda Wood
Martin G. Wunsch
PhD PLLC
Patricia & Ronald
Yakubison
Howard Young
Geri Zandi
Norman Zauel

\$100 ~ \$199

Marilyn & Ellwyn Albee
Mark J. Albrecht
Beverly Alfes
Denise Allen
Orlin Allen
Bea Anderson
Anonymous
Chris Auger
Dennis & Deborah Basierbe
Charles Baxter
Virginia Bennett
Trish Beyreis
Louie Blocker
Julie & Al Booth
Douglas & Suzanne Brenton
Teri Brisse
Robert Brooks
Kim Bryson
Jerry Brzezinski
Evelyn Butler
Cheri Byars
Daun Campbell
Debra & Louis Campbell
Laura Cazares

William & Teresa Chomic
Lawrence & Carol
Ciaramitaro
City of Rochester
Timothy Coolbaugh
Ellen & Bill Couch
Gretchen Cousino
Marilyn Creelman
Tom & Chris Dearlove
Judith Moon-Desoff &
Michael Desoff
Jim & Karen Dimond
Jeff & Veronica Donovan
Linda Dornbusch
Cheryl & John Doudna
Joseph & Julie
Douse-Angileri
Paula Duffy
Jason Durfee
Marc Elie
Richard Elsholz
LuAnn Eriksen
Virginia Farrug
Elizabeth Faust
Wilma Fellman
Paul Ferman
Karen Feun
In Memory of
Lindson Feun
Charles & Eileen Fisher
Kenton Flatau
Linda Forrer
Marsha Fortner
John Foster
Dawn Geisert
Patricia & James Geroux
Gregory Gillham
Paul & Barbara Goodman
Arnold Gray
Jill Greimel
Joseph & Sandra Gribbin
Pamela Griffin
Anthony & Beth Guest
Mark Guthrie &
Marna Nemon
Evelyn Hawes
Marilyn Hayden
Philip Hemke

Paul & Anna
Hepler-Ferman
Linda J. Hillier-Rivard
Regina Himmelspach
Catherine Hypes
Monica & Marcello
Iannucci
Judy Jacobs
Barbara & Jack Jagoe
Denise Marie Jarfas
Jeffery & Earlene Jeffery
Joseph Jenosky
Philip & Dawn Jeszke
John Kane
Bonnie & David Kennedy
Keith & Marlana Ketelhut
Phil & Aiden King
Kerry & Linda Knight
In Memory of
George White
Rebecca Konkel
William & Judith E. Kulchar
Marjorie Kumar
William & Joette Kunse

\$100 ~ \$199 Continued

Robin Laird
 Martin & Carol Lauer
 Carol Lechtzin
 Nancy Lee
 Jean Lepard
 John Lucas
 Michael & Carol Lukity
 Robert Mahin
 Frida Markle
 John Martin
 McClelland Family Trust
 In Memory of
 Joyce McCelland
 Lynn Mclean
 Rosemary Meyecic
 James & Joyce Montane
 Audrey Moon
 Elizabeth & Ray Moore
 Vickie Morton
 Mark Munger
 Jeanette Nitsch

Dr Catherine Ogawa
 Richard & Ann Oke
 Cynthia Omans
 Kimberly Palter
 Dave & Suellen Parkes
 Rev Randy Phillips
 William & Donna Polom
 Martha Preston
 Phyllis Price
 Kenneth & Patricia Quint
 Dana & Cindy Randall
 Emmaly Reid
 Gerald G Riegel
 Cheryl & Kevin Riley-Doucet
 Kaye Rittinger
 Edward & Kathleen Robbins
 William Ross
 Brian & JoAnn Royce
 Maria Runk
 Robin Ryan
 Reynold Sagert

Karen Sappington
 Nicole Savarino
 Thomas Sawyer
 Eleanor Saxon
 Jennifer Dale Schreiner
 Victoria & Robert Schuler
 Mr. & Mrs. Kenneth
 Schultz
 Patricia Semrau
 Laura Shelton
 Harriet Siden
 Deborah & Kenneth
 Simkowski Sr
 Mary Sloan
 Joann Snethkamp
 Michele Spear
 Brock Stalions
 James & Evelyn Steimel
 James & Jean Stock
 Gerald Tepatti
 Roger & Barbara Timm

Julie & Paul Tomasko
 John & Lenore Treba
 Daniel Treppa
 Todd & Mary Vest
 Gail Vierk
 Robert & Beverly Walters
 Carol Ward
 Charlotte D. Westbrook
 Paulette Width
 Scott & Kathryn Wilkins
 Andrew & Mary Wilson
 Robert Wollard
 Robert & Harriet
 Wollborg
 Denise Woznick
 Tom & Colleen Wreesman
 Jocelyne Yanez
 Diane Zygmuntowicz
 In Honor of Willis
 & Ivy Brenton

Gift In Kind

313 Presents
 A&A Liquor
 Avon Players
 Bahama Breeze
 Bakehouse 46
 Speedy and Hess Bates
 Bavarian Inn Lodge
 Judy Bonner
 Boulder Pointe Golf
 Robert and Colleen Brnabic
 Busch's
 Cheryl Marshall
 Louis Campbell
 CK Diggs
 Classic Lanes Bowling
 Clean Eatz
 Cold Stone Creamery
 Cooper's Hawk
 Crown Plaza Auburn Hills
 Detroit Historical Society
 The Dossin Museum
 The Detroit Pistons
 The Detroit Red Wings
 Detroit Repertory Theatre
 The Detroit Tigers, Inc.
 The Detroit Zoo
 The Dinner Detective
 DoubleTree Hilton
 El Fagon Authentic Mexican Grill
 Finnegan's Pub
 The Flint Institute of Art

Fogo De Chao
 Front Door Med Spa
 Gordon's Food Service
 Grand Tavern
 Granite City
 Julie Granthen
 Green Leaf Salon and Spa
 Griffin Claw Brewing Co.
 Guido's Premium Pizza
 Heirloom Hospitality
 Henriquez BBQ
 Jimmy Johns Field
 Brian Kessler
 Angela G. King
 Kona Grill
 Kruse & Muer On Main
 The Lash Lounge
 Elaine Larsen
 Charles and Kathy Leonard
 Lelli's
 Leo's Coney Island
 LisaMarie Gabriele
 Lowe's Store #684
 Lucky's Steakhouse
 The M-Den
 Meadow Brook Hall
 Meadow Brook Theatre Board
 Meadow Brook Theatre Guild
 Michigan Renaissance Festival
 Mr. C's Car Wash
 Nino's Italian House

Ron Norkiewicz
 Nothing Bundt Cakes
 Oakland University -
 School of Music, Theatre, & Dance
 Oakland University Golf Course
 Oakland University Sports Center
 Ocean Prime
 Outdoor Adventure Center
 Paul and Judy Anders
 Pewabic Pottery
 Peggy & Ken Philippi
 Port Huron Museum
 Purple Rose Theatre
 Jacqueline Racchi
 Red Lobster
 Ed & Kathy Robbins
 Royal Park Hotel
 Robin Ryan
 Seasons 52
 Sedona
 Skate World of Troy
 Somerset Inn
 John Sopoliga
 Stoney River Steakhouse + Grill
 Thom and Maryann Foxlee
 Werner's Hallmark
 The Williams Family
 Wojo's Greenhouse
 Joan Wood
 Yard House
 Patricia E. Zinser

Names on this list reflect donors and contributions as of April 14th, 2024.
 Every effort has been made to ensure complete and accurate lists.
 Please notify the Box Office with corrections.

A young woman with dark hair, wearing white scrubs and a stethoscope, stands in a hospital room. She is smiling and looking off to the side. Her hands are resting on a table in front of her. She has an identification badge around her neck. The background shows a typical hospital room with a window and some medical equipment.

MEET NAJAE'

- *Nursing program senior*
- *Diane Norris Endowed Nursing Scholarship recipient*

Nursing student **NAJAE' RATCLIFF** wanted compassion at the core of her career, and found that curriculum and community in Oakland University's School of Nursing. In the final stages before graduation, her education has transformed her lifelong dream of becoming a labor and delivery nurse into her eventual profession and has built confidence and knowledge to thrive in her field.

Find your purpose at **OAKLAND UNIVERSITY.**

oakland.edu



WEEKLY RENT ANGELS

ROUTE 66

Week One

Dan & Kathy Moore

Week Two

Dan & Kathy Moore

Week Three

*Mike and Phylis Karas
Route 66 Travelers*

Week Four

Thom & Maryann Foxlee

ELLA, FIRST LADY OF SONG

Week One

Mary & Tim Caughlin

Week Two

Anita & John Savio

Week Three

Anita & John Savio

Week Four

Anita & John Savio

.....

KEN LUDWIG'S MORIARTY

Week One

Ken & Peggy Philippi

Week Two

Ken & Peggy Philippi

Week Three

Ken & Peggy Philippi

Week Four

Ken & Peggy Philippi

A CHRISTMAS CAROL

Week One

*Terence Kilburn
Artistic Director of MBT 1970-1994*

Week Two

MBT Retirees

Week Three

Mary Sloan & Jeff Lichty

Week Four

Anonymous

Week Five

Available

Week Six

*Tamara Foster-
In Loving Memory of Sandra Haydel,
a long time supporter*

FATHER OF THE BRIDE

Week One

JoAnne E. & Arden T. McClure

Week Two

JoAnne E. & Arden T. McClure

Week Three

JoAnne E. & Arden T. McClure

Week Four

JoAnne E. & Arden T. McClure

A LITTLE MORE ALIVE

Week One

A Generous Donor

Week Two

A Generous Donor

Week Three

Dan Goggin

Week Four

A Generous Donor

NATIVE GARDENS

Week One

Ramona & Christoph Winarski

Week Two

Cheryl & Larry Marshall

Week Three

*Ray & Michelle Butters-
In Loving Memory of Bill Zandi*

Week Four

Eleanor A. Christie

.....

Want to be an Angel?

Become a part of Meadow Brook Theatre's season of Broadway-quality performances by becoming a Rent Angel.

Rent Angels receive special recognition throughout the season and complimentary tickets to the theatre.

For more information & sponsorship amounts:
(248) 370-3316 or groupsales.mbt@gmail.com

BOARD OF DIRECTORS

Mr. Thom F. Foxlee / *President*

Mr. John Savio / *Vice President*

Mr. Jeff Wurges / *Secretary*

Mr. David Kata / *Treasurer*

Mrs. Melinda Conway-Callahan

Ms. Elaine K. Carey

Mrs. Mary Caughlin

Mr. Dan Goggin

Mr. Tyrick Wiltz Jones

Ms. Mallory A. Kallabat

Ms. Angela G. King

Mr. Stephen W. Mackey

Mr. Donald O'Dowd

Mrs. Kimberly Palter

Mrs. Robin Ryan

In Loving Memory

Mrs. Maggie Allesee

Ms. Cindy Williams

COMMUNITY BOARD

Colleen Brnabic Cindy Cirar

Julie Granthen Mary Mbiya Lynn Oates

SPECIAL THANKS

Oakland University, Meadow Brook Theatre Board of Directors, Meadow Brook Theatre Guild,
Jennifer Fry, Kitty Gentile, Julie Rank and Penny Vigneau

THE MEADOW BROOK THEATRE VOLUNTEER USHER GROUPS

Act II, A La Carte, On the Aisle, Troy Newcomers.

Cover Art: Chet Johnson

LET US KNOW YOUR THOUGHTS: communications.mbt@gmail.com

IMPORTANT INFORMATION FOR OUR PATRONS

More and more of our patrons are being exploited by UNSCRUPULOUS TICKET RESELLERS.

Oftentimes our tickets are being marketed on secondary ticket sites and being sold at prices far above the price you will pay by purchasing your tickets through Meadow Brook Theatre.

If you purchase tickets from another source, you might pay too much for your tickets or may even pay for *invalid tickets*. You also may not be able to get help from Meadow Brook Theatre's ticketing staff if you have a problem; there will be no in-house record of your transaction and we cannot contact you if there is a change of performance time, traffic notices, or to provide any other special information.

TO AVOID BEING ENSNARED BY TICKET RESELLERS:

- Bookmark our website www.MBTheatre.com for ticket and show info
- Sign up for our eNewsletter to receive information directly from MBT

We urge you to PROTECT YOURSELF by purchasing directly from the official authorized source for Meadow Brook Theatre tickets.

Buy your tickets by phone at 248-377-3300, or at the Meadow Brook Theatre Box Office.

Or buy through Ticketmaster at Ticketmaster.com or 800-745-3000.



Meet Noah

- *Musical Theatre BFA '22*
- *2021 winner of the "NextGen National: Finding the Voices of Tomorrow" competition*

NOAH CANALES comes prepared and adapts to challenges. OU provided opportunities that taught Noah professionalism, prepared him to face challenges and pushed him to compete and achieve, even winning a prestigious national vocal competition. After graduation, he signed with a New York agency, putting him on a path to a dream career on Broadway.

Blaze your trail at **OAKLAND UNIVERSITY.**

oakland.edu



STAFF

Managing Director / *Cheryl L. Marshall*

Artistic Director / *Travis W. Walter*

Company Manager / Stage Manager /

Britt Sicker

Choreography Consultant / *Tyrick Wiltez Jones*

Group Sales / Administration Assistant /

LisaMarie Gabriele

Box Office Manager / *Sharon Harper*

Assistant Box Office Manager / *Tim Baum*

Box Office Associates / *Melissa Gabriele, DJ Jones*

House Managers / Ushers / *Valentine Dudek,*

Jaclyn Ellis, Abby Gora, Alexa Huss,

Tahjuanna Jones, Reilly Kerrigan,

Izzy Krzewski, Raquel Pena-Aguilera,

Amanda Pordon, Annabel Pulman,

Parker Splete

Production Manager / *Brian K. Kessler*

Technical Director / *Daniel Silverman*

Head Stage Technician / *Jeremy Burzuk*

Properties Director / *Kristen Gribbin*

Costume Shop Manager / *Liz Goodall*

Costume Shop Foreman / *Mary Pettinato*

Wardrobe Supervisor / *Jade Jaarda*

Scene Shop Foreman / *Riley Stone*

Scenic Carpenters / *Isabella Harvey,*

Jordan Hayes-Devloo

Scenic Artist / *Gwen Lindsay*

Master Electrician / *Griffin Proctor*

Assistant Master Electrician / *Zach Dalton*

Audio Engineer / *Mike Duncan*

Interns / *Raegan Cantrelle, Caridad Guy,*

Genika Landry, Lillian Levine,

Jacob Lipski, Kaley Norsworthy,

Devin Stevenson

House Photographer / Sean Carter Photography: *Sean Carter*

House Videographer / DR Legacy Productions: *Dave Legacy, Patty Larin Walby, Karl Walby*

MEADOW BROOK THEATRE GUILD

The Meadow Brook Theatre Guild is a volunteer group organization to support and promote community interest in Meadow Brook Theatre.

President / *Jeni Walch* Vice President / Event Advisor / *Maryann Wilshere*

Treasurer / *Speedy Bates* Recording Secretary / *Sandy Fick & Melinda Reeber*

Corresponding Secretary / *Jan Shotwell* Past President / *Sue May*

Parliamentarian / *Sue Jayroe* Newsletter / *Dawn Evoe-Danowski & Maryann Wilshere*

GUILD MEMBERS

Judy Anders

Deanna André

Speedy Bates

Terri Bendes

Susan Blair

Colleen Brnabic

Patricia Bruneel

Marina Cantarella Russo

Mary Caughlin

Paula Choike

Kathy Ciaramitaro

Diane Corker

Paulette Cushnier

Karen Elliott

Dawn Evoe-Danowski

Sandy Fick

Maryann Foxlee

Deanna Gross

Bruna Grosse

Mary Halley

Judith Hickman

Marie Hochstein

Sue Jayroe

Martha Kent

Teresa Koempel

Birdie Kutcher

Dorothy LaBay

Katherine Leonard

Patricia Lesich

Susan Marie Lettner

Josephine Long

Cheryl Marshall

Sue May

Theresa Meegan

Joyce Obenhoff

Suellen Parkes

Gwendolyn Ray

Doreen Raynak

Melinda Reeber

Robin Richards

Barbara Sasseen

Bernadette Setlik

Jan Shotwell

Shirley Sikov

Romayne Stapleton

Carol Stidham

Ann Sweet

Lynn Vanderbeek

Jeni Walch

Lucille Walla

Kathy Warriner

Maryann Wilshere

Judie Wurges

Since the inception of the Meadow Brook Theatre Guild in 1977, the Guild has raised just over \$1,000,000 to benefit Meadow Brook Theatre. If you would like information on joining the Meadow Brook Theatre Guild, call (248) 370-9705

ACKNOWLEDGEMENT

Meadow Brook Theatre is most appreciative of the support of the Meadow Brook Theatre Guild.

WISH LIST

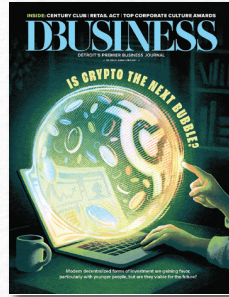
Visit MBTheatre.com/wish-list/

Donations of goods and services make a difference for Meadow Brook Theatre! By helping us reduce costs, you can help MBT contribute more resources to enhancing artistic programming.

HOUR MEDIA PROUDLY SUPPORTS MEADOW BROOK THEATRE AND ITS MISSION.



Your Lifestyle



Your Insight

YourStories | YourStyle

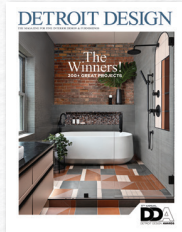
YOUR CITY MAGAZINES

HOUR

MEDIA



Your Celebration



Your Sanctuary



Your Craving



Your Wellness

**TO LEARN MORE ABOUT HOUR'S EVENTS AND OUR OTHER NON-PROFIT PARTNERED OCCASIONS, PLEASE SCAN THE QR-CODE.
WE LOOK FORWARD TO SEEING YOU AGAIN AND AGAIN!**



AVAILABLE ON NEWSSTANDS ACROSS METRO DETROIT | FOR SUBSCRIPTIONS 866.660.MAGS
FOR ADVERTISING INFO CALL 248.691.1800 | VISIT ONLINE AT WWW.HOURDETROIT.COM